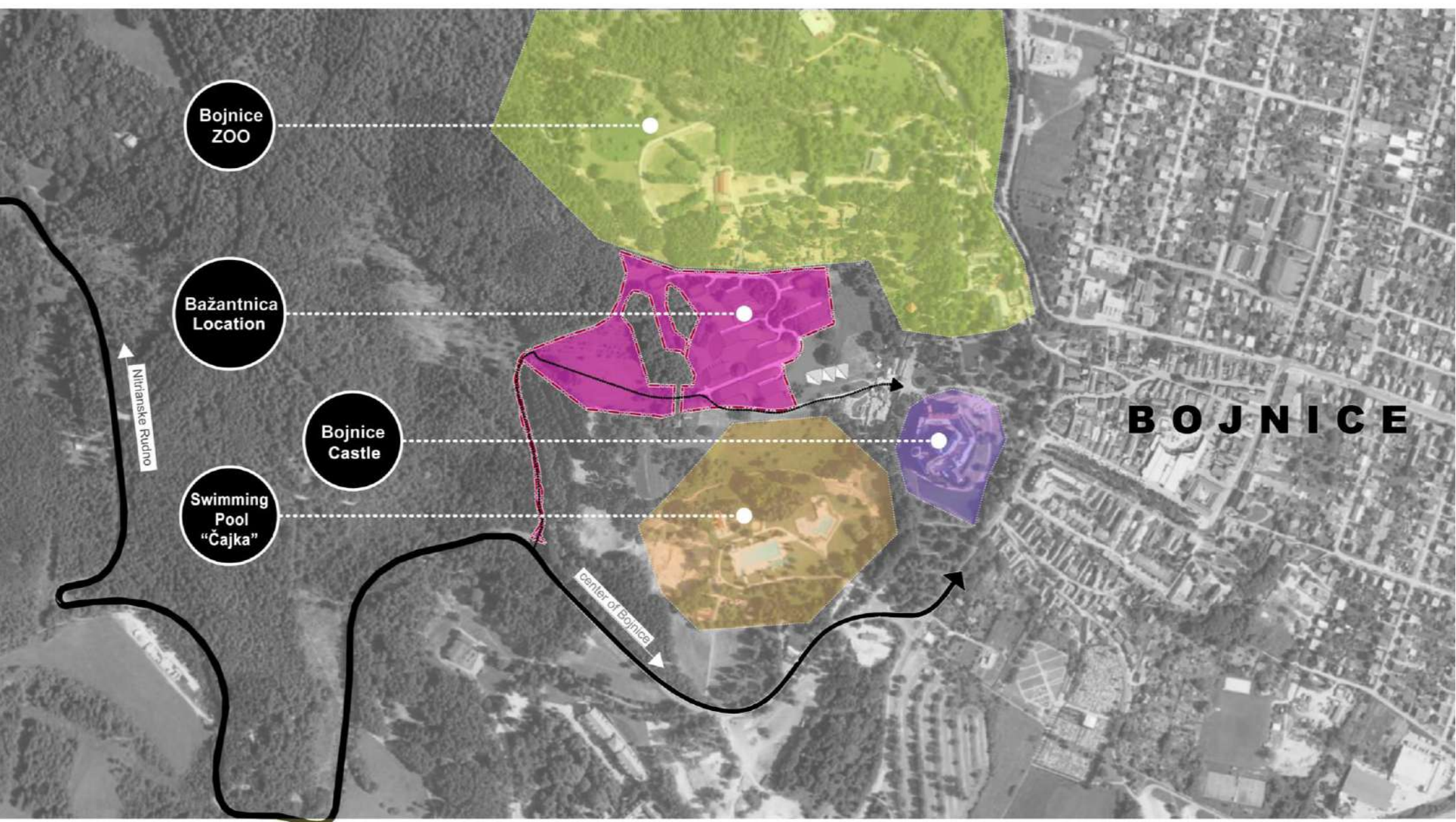


# BAŽANTNICA BOJNICE

PROJECT PRESENTATION

# BAŽANTNICA BOJNICE

THE AMBITION OF THE ARCHITECTURAL DESIGN WAS A SENSITIVE  
PLACEMENT OF EACH OBJECT IN THE TERRITORY OF THE EASTERN  
PART OF THE BAŽANTNICA LOCATION



## LARGER CONTEXT

autor: Ing. arch. Marián Minarovič, Ing. arch. Tomáš Benák

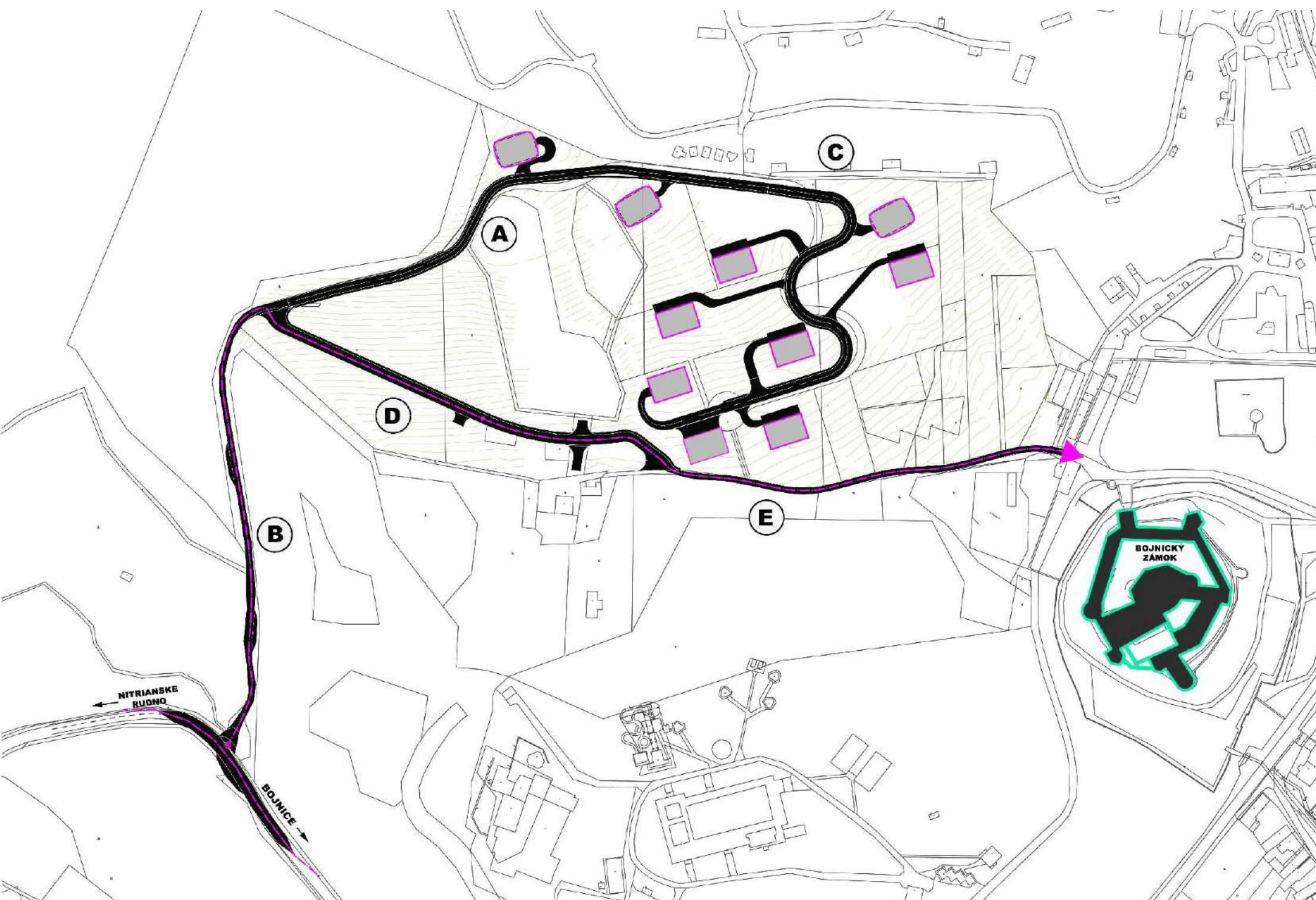
MINARCH



# BAŽANTNICA BOJNICE

THE LOCATION IS ACCESSIBLE FROM THE III CLASSSS ROAD No. 111/050062 IN THE DIRECTION OF BOJNICE - NITRIANSKE RUDNO BY THE EXISTING ROAD ( BRANCH LINE „B“), THAT IS CONNECTED TO THE SYSTEM OF NEW COMMUNICATION BRANCHES: „A“, „C“ and „D“.

BRANCH „A“ PLUS BRANCH „C“ FORM CONTINUOUS AREA COMMUNICATION FROM WHICH ENTRANCES TO INDIVIDUAL BUILDINGS ARE CONNECTED.



BRANCH „D“ - the so-called „ LOWER ROAD“- MAKES AVAILABLE ALL LOCATIONS FROM THE NORTHWEST SIDE.

ITS CONSTRUCTION WILL ENSURE THE TRANSPORT SERVICE TO THE CASTLE AND ITS PREMISES AND THE CURRENT ROUTE FROM THE CITY CENTER IN FRONT OF THE CASTLE WILL SERVE AS A SLIP ROAD.

## TRANSPORT SOLUTION

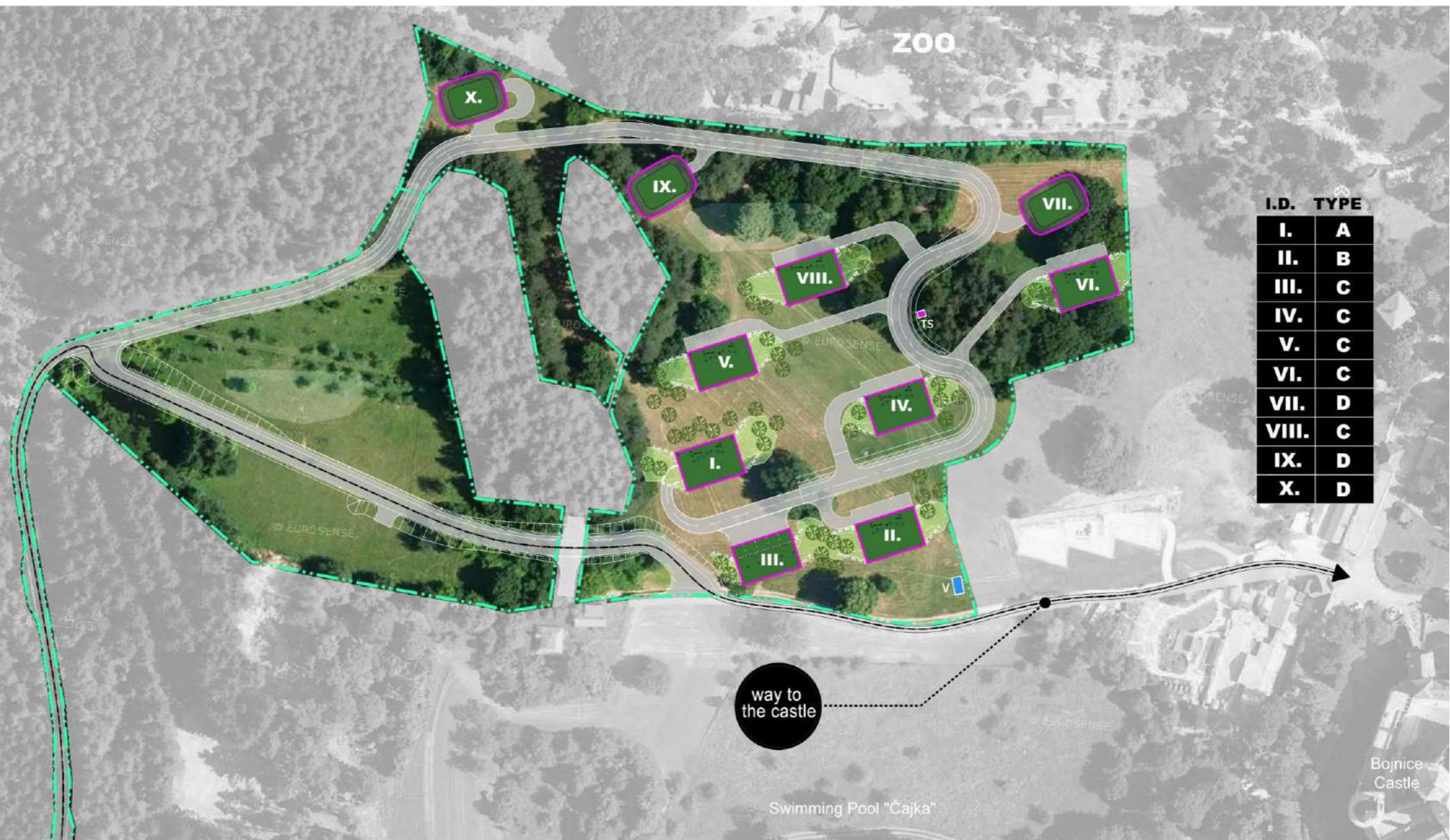
autor: Ing. arch. Marián Minarovič, Ing. arch. Tomáš Benák

MINARCH



# BAŽANTNICA BOJNICE

10 APARTMENT HOUSES (I. - X.) ARE PROPOSED IN THE  
RESOLVED AREA.  
5 APARTMENTS ARE DESIGNED IN EACH BUILDING.



I.D.	TYPE
I.	A
II.	B
III.	C
IV.	C
V.	C
VI.	C
VII.	D
VIII.	C
IX.	D
X.	D

**THE APARTMENTS HAVE A UNIFORM BUILT-UP AREA:**  
15.7 x 24.0 m. BASED ON THE DIFFERENCE OF THE TERRAIN, CONFIGURATION  
AND THE POSITION OF THE PRESENT TREE GREEN, 4 TYPES OF OBJECTS ARE  
PROPOSED (MARKED AS A, B, C, D).

## SITUATION

autor: Ing. arch. Marián Minarovič, Ing. arch. Tomáš Benák

MINARCH



# BAŽANTNICA BOJNICE

RESPECTING AND PROTECTING OUTLOOK ON THE CASTLE  
AND ITS SURROUNDINGS WAS THE MAIN PRIORITY WHEN  
DESIGNING THE FACILITIES



Picture No.  
I.



Picture No.  
II.



Picture No.  
III.

FROM THE STEP-BY-STEP VIEW, IT IS POSSIBLE TO CLEARLY COMPARE THE CURRENT  
AND PROPOSED STATUS:

- I. CURRENT STATE
- II. STATE AFTER CONSTRUCTION WITHOUT PLANTING
- III. CONDITION AFTER CONSTRUCTION AND PLANTING

## PROTECTED VIEWS

autor: Ing. arch. Marián Minarovič, Ing. arch. Tomáš Benák

MINARCH



# BAŽANTNICA BOJNICE

A UNIFORM MASS-SPACE PRINCIPLE IS USED IN THE DESIGN OF OBJECTS TYPE „A, B, C“.

THE MAIN MISSION OF THEIR ARCHITECTURAL EXPRESSION IS TO MAKE THE BUILDING VOLUME INVISIBLE IN THE SUBJECT AREA. THE BUILDINGS ARE CONCEPTED AS PART OF AN ARTIFICIALLY CORRUGATED TERRITORY IN THE DIRECTION OF LAYERS AND THEY ARE PRESENTED IN FRONT-BACK LINE, I.E. WITHOUT SIDE FACADES.

THE SIDES OF THE PROPOSED BUILDINGS WILL BE ABSORBED BY THE MASS OF LANDSCAPING. THE FRONT - FRONTAL - SOUTHERN FACADE ARE PRESENTED BY A SINGLE ELEMENT:

A SYSTEM OF TWO-PART, ROTATING, SHADING SHUTTERS. DIFFERENT ROTATING POSITIONS GIVE THE OBJECT DYNAMIC, REGULATING INTIMITY AND SHADING THE INTERIOR.

THE FAÇADE

SLAMMS CREATE A UNIFORM VISUAL ELEMENT OF THE DESIGNED OBJECTS.



THE FRONT - FRONTAL - SOUTHERN FACADE ARE PRESENTED BY A SINGLE ELEMENT:

A SYSTEM OF TWO-PART, ROTATING, SHADING SHUTTERS. DIFFERENT ROTATING POSITIONS GIVE THE OBJECT DYNAMIC, REGULATING INTIMITY AND SHADING THE INTERIOR. THE FACADE SLAMMS

CREATE A UNIFORM VISUAL ELEMENT OF THE DESIGNED OBJECTS.

## APARTMENT HOUSES TYPE A, B, C

autor: Ing. arch. Marián Minarovič, Ing. arch. Tomáš Benák

MINARCH



# BAŽANTNICA BOJNICE

TYPES OF OBJECTS „A,B,C“

THEY HAVE REAR FACADES ORIENTED TO  
THE ATRIUM, CREATED BY TERRAIN  
MODULATION.



HORIZONTALLY IS THE REAR FACADE DIVIDED  
INTO:

- SUNKED COVERED PARKING
- APARTMENT FLOOR 2ND.

## APARTMENT HOUSES TYPE A, B, C

autor: Ing. arch. Marián Minarovič, Ing. arch. Tomáš Benák

**MINARCH**



# BAŽANTNICA BOJNICE

## TYPE A

THE APARTMENT HOUSE TYPE „A“ IS EXPRESSIVELY SET INTO THE TERRAIN  
AND HAS AN UNDERGROUND PARKING



THE REAR PART OF THE 1ST FLOOR IS BELOW GROUND LEVEL.  
THE REAR PART OF THE 2nd FLOOR HAS CONTACT WITH THE TERRAIN AND THE EXIT TO THE  
TERRACE.  
THE FRONT FACADE IS IDENTICAL TO TYPE „B“ AND TYPE „C“

## APARTMENT HOUSE - TYPE A

autor: Ing. arch. Marián Minarovič, Ing. arch. Tomáš Benák

**MINARCH**



# BAŽANTNICA BOJNICE

## TYPE „B“

THIS TYPE OF APARTMENT HAS A TERRAIN CONFIGURATION AS AN UPPER FLOOR  
ENTRANCE.

STATIC TRANSPORT IS INSTALLED IN THE 1<sup>st</sup> FLOOR ABOVE GROUND AND IT IS  
ROOFED WITH A LIGHT CARPORT



LOWER FLOOR = SEMI-SUBTERRANEAN 1<sup>ST</sup> UNDERGROUND FLOOR.  
HAS CONTACT WITH THE TERRAIN FROM THE FRONT SIDE.

## APARTMENT HOUSE - TYPE „B“

autor: Ing. arch. Marián Minarovič, Ing. arch. Tomáš Benák

MINARCH



# BAŽANTNICA BOJNICE

## TYPE C

IT USES THE CONNECTION OF THE OBJECT FROM THE BACK THROUGH A  
RECESSED ENTRANCE.

THIS CREATES AN INTIMATE ATRIUM, LINED WITH A SYSTEM OF SLOPES AND  
GARDEN TREATMENTS.



THE STATIC TRANSPORTATION IN THE 1ST FLOOR IS  
INSTALLED UNDER THE APARTMENT FLOOR OF THE  
2ND FLOOR

## APARTMENT HOUSE – TYPE C

autor: Ing. arch. Marián Minarovič, Ing. arch. Tomáš Benák



# BAŽANTNICA BOJNICE

VIEW INTO ATRIUM



LOCATING OF THE ENTRANCES BEHIND THE BUILDING AND IMBEDING THEM  
INTO THE TERRAIN,  
WILL BE USED THE PRINCIPLE OF HIDDEN TRANSPORTATION AND  
PRESERVES OF UNINTERRUPTED VIEWS TO THE LOCATION.

## TYPE „A, B, C“ - HIDDEN STATIC TRANSPORT

autor: Ing. arch. Marián Minarovič, Ing. arch. Tomáš Benák

MINARCH



# BAŽANTNICA BOJNICE

TYPE  
D

IT REPRESENTS A LEVITATING VOLUME FLOATING OVER A  
UNDULATING TERRAIN.



COPPER DIAGONAL TEMPLATE COVERING CREATES A PLEASANT  
ORGANIC TEXTURE

## APARTMENT HOUSE - TYPE D

autor: Ing. arch. Marián Minarovič, Ing. arch. Tomáš Benák

MINARCH



# BAŽANTNICA BOJNICE

TYPE "D" BUILDINGS ARE APARTMENT BUILDINGS NUMBER VII, IX AND X



THEY ARE LOCATED IN THE FOREST WHICH FORM A BASIC PART OF ARCHITECTURAL ATTEMPT TO MINIMIZE INTERVENTION IN THE EXISTING GREEN VERDURE IN WHICH OBJECTS SEEM AS "GUESTS IN NATURE".

## APARTMENT HOUSE -TYPE D

autor: Ing. arch. Marián Minarovič, Ing. arch. Tomáš Benák

**MINARCH**



# BAŽANTNICA BOJNICE

TYPE  
D

..... DESIGNED TERRACES OFFER PANORAMIC VIEWS OF THE LANDSCAPE

.....



## APARTMENT HOUSE TYPE D - PANORAMIC VIEWS

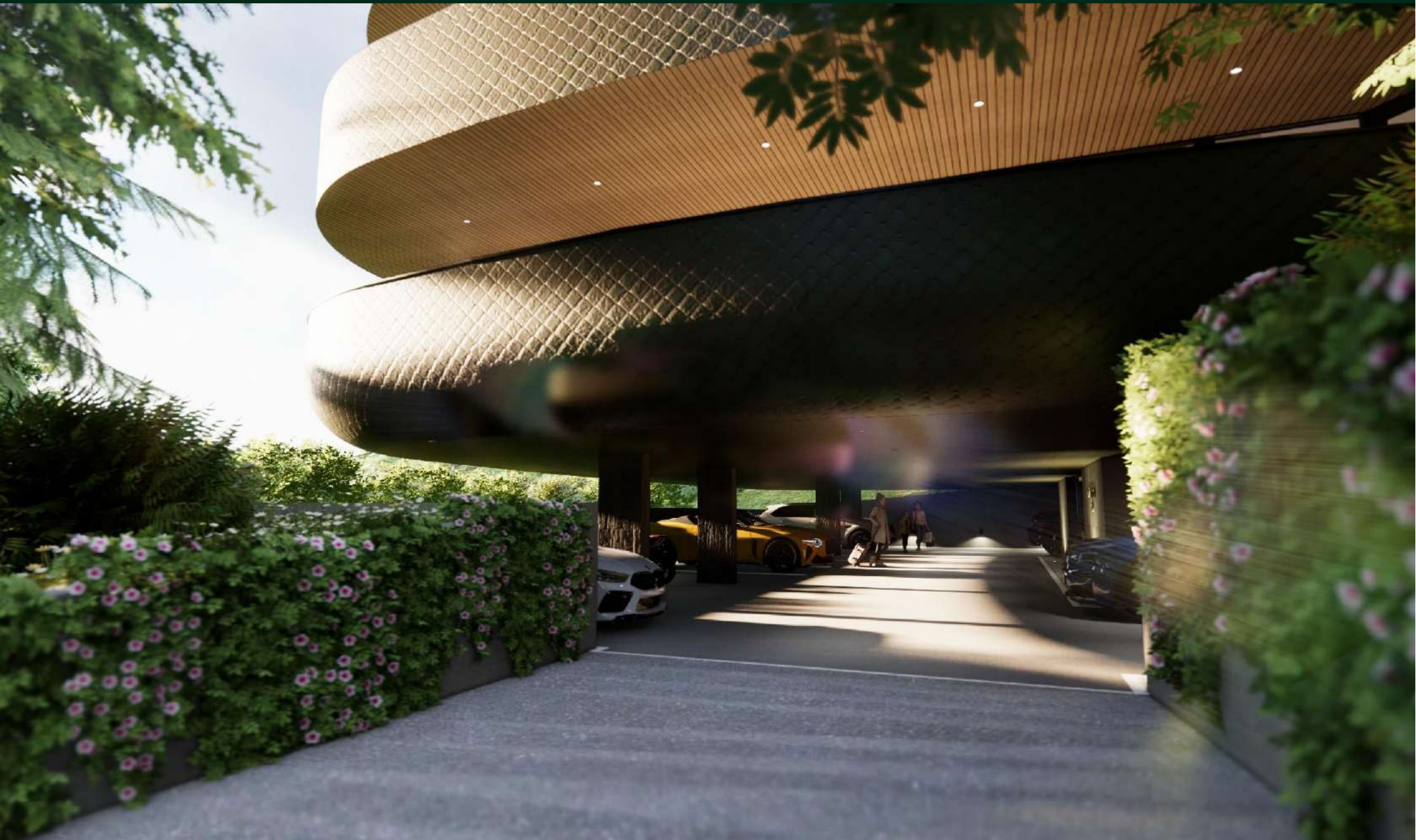
autor: Ing. arch. Marián Minarovič, Ing. arch. Tomáš Benák

MINARCH



# BAŽANTNICA BOJNICE

THE ENTIRE VOLUME OF THE BUILDING IS  
CONSTRUCTED ON A COLONNADE AND  
THE  
ROOFED CARPORTS WERE CREATED.



THIS SOLUTION MINIMIZES THE IMPACT OF TRAFFIC IN  
THE  
AREA AND IT ELIMINATES PARKING IN OPEN SPACE

## APARTMENT HOUSE TYPE „D“ – HIDDEN TRANSPORT

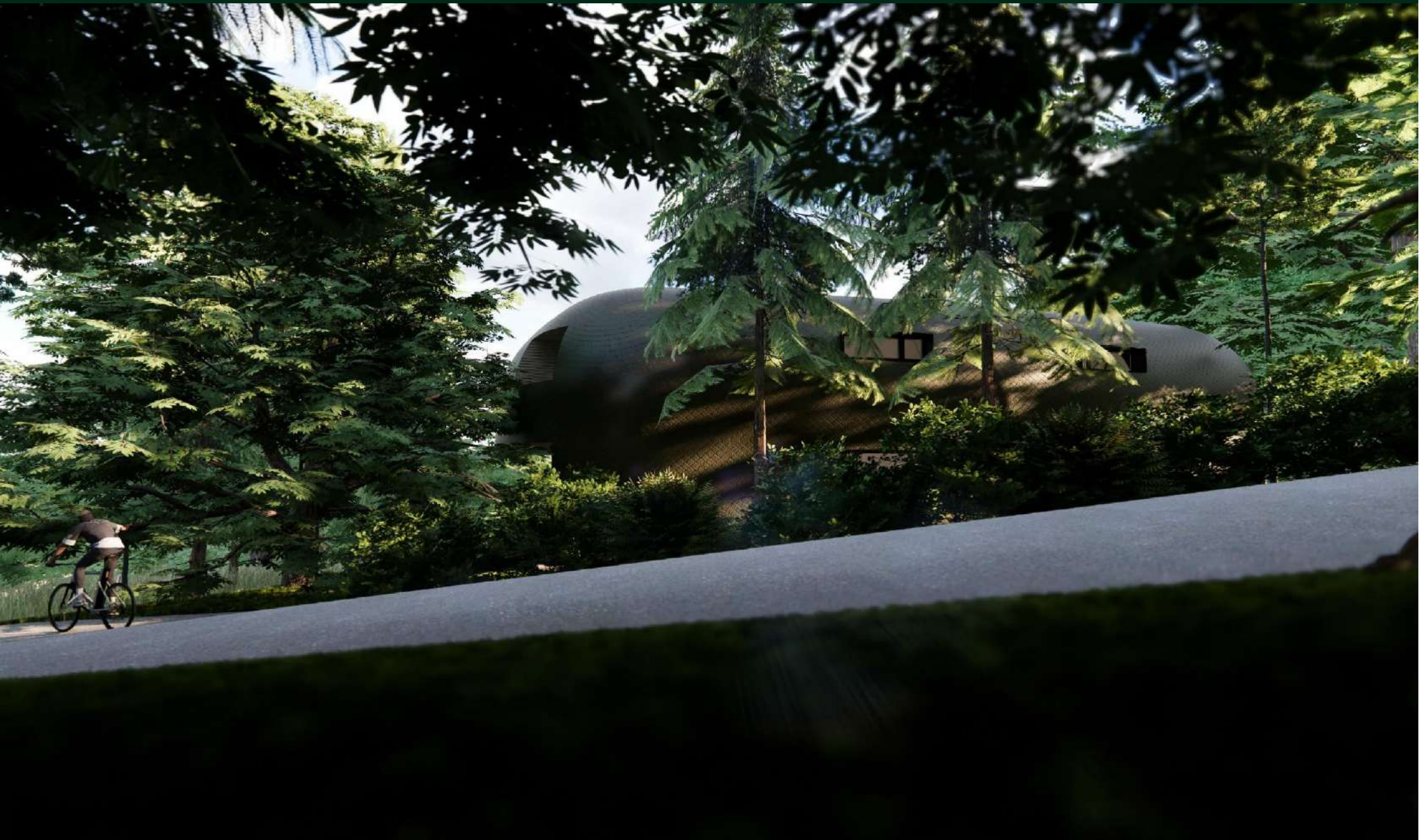
autor: Ing. arch. Marián Minarovič, Ing. arch. Tomáš Benák

**MINARCH**



# BAŽANTNICA BOJNICE

TYPE  
D



... DESIGNING OF APARTMENT HOUSE TYPE „D“ WAS AN INTENTION TO PLACE THE OBJECT UNNOTICED IN THE FOREST ....

## APARTMENT HOUSE TYPE D - HIDDEN IN VERDURE

autor: Ing. arch. Marián Minarovič, Ing. arch. Tomáš Benák

**MINARCH**



# BAŽANTNICA BOJNICE

CONCEPT OF SPATIAL ARRANGEMENT OF MASSES IN ACCORDANCE WITH TERRAIN MODELING ALLOWS TO MINIMIZE THE VISUAL PERCEPTION OF THE OBJECTS IN THE LAND



USING AUTHENTIC GROUPING OF WOODS AND HERBS ENSURES CONFORMITY OF BUILDINGS WITH THE SURROUNDING LANDSCAPE.

## LANDSCAPING

autor: Ing. arch. Marián Minarovič, Ing. arch. Tomáš Benák

**MINARCH**



# BAŽANTNICA BOJNICE

THE BASIS OF THE VEGETATION MANAGEMENT CONCEPT IS RESPECT FOR NATURE. TO PLANT AREAS AND PROVIDE THE DESIRED VISUAL PERCEPTIONS, ORIGINAL DOMESTIC SPECIES ARE USED. ADDING BLACK PINES ON (THAT ARE LOCATED IN ORIGINAL GROWTHS) WILL REPRESENT AN ECO-CULTURAL SYMBOL OF THE ENVIRONMENT. TREE CLUSTERS ARE EKED OUT WITH GROUPS OF LOWER BUSHES



ON FREE AREAS, AS WELL AS ON THE ROOFS OF BUILDINGS, AUTHENTIC AND ECOLOGICALLY RELIABLE PLANT ENSEMBLES WILL APPLY. BY REALIZING DRIVEWAYS FROM NATURAL MATERIALS WITH HIGH PERMEABILITY, THE OVERALL LANDSCAPING CONCEPT WILL BE INTEGRATED.

## LANDSCAPING

autor: Ing. arch. Marián Minarovič, Ing. arch. Tomáš Benák

**MINARCH**



# BAŽANTNICA BOJNICE



THE CONCEPT OF VIEWS TO THE COUNTRY WILL BE ACHIEVED USING OF SPATIALLY VARIED GROUPS OF TREES AND BUSHES. THIS WILL ALLOW TO PRESERVE VISUALLY VALUABLE LANDSCAPE ELEMENTS.

## LANDSCAPING

autor: Ing. arch. Marián Minarovič, Ing. arch. Tomáš

Benák  
MINARCH



# BAŽANTNICA BOJNICE



THE INTENSIVE GREEN ROOFS OF THE BUILDINGS BLEND IN WITH THE SURROUNDINGS  
IN THE FORM OF UNIFORM GARDEN ARRANGEMENTS.

## GENERAL VIEW OF THE AREA – LOWER

autor: Ing. arch. Marián Minarovič, Ing. arch. Tomáš Benák

**MINARCH**



# BAŽANTNICA BOJNICE



DUE TO COLOR VARIABILITY DURING THE YEAR, VERTICAL AND HORIZONTAL  
SURROUNDINGS CREATED BY TREES, BUSHES AND MEADOWS ENABLE  
AESTHETIC AND DYNAMIC CHANGES IN NATURE.

## GENERAL VIEW OF THE AREA – LOWER

autor: Ing. arch. Marián Minarovič, Ing. arch. Tomáš Benák

**MINARCH**



# BAŽANTNICA BOJNICE



THERE ARE NO TECHNOLOGICAL DEVICES OR CHIMNEYS ON THE ROOFS OF BUILDINGS.

## AREA FROM A BIRD'S PERSPECTIVE

autor: Ing. arch. Marián Minarovič, Ing. arch. Tomáš Benák

**MINARCH**



BAŽANTNICA BOJNICE

THANK YOU FOR YOUR ATTENTION